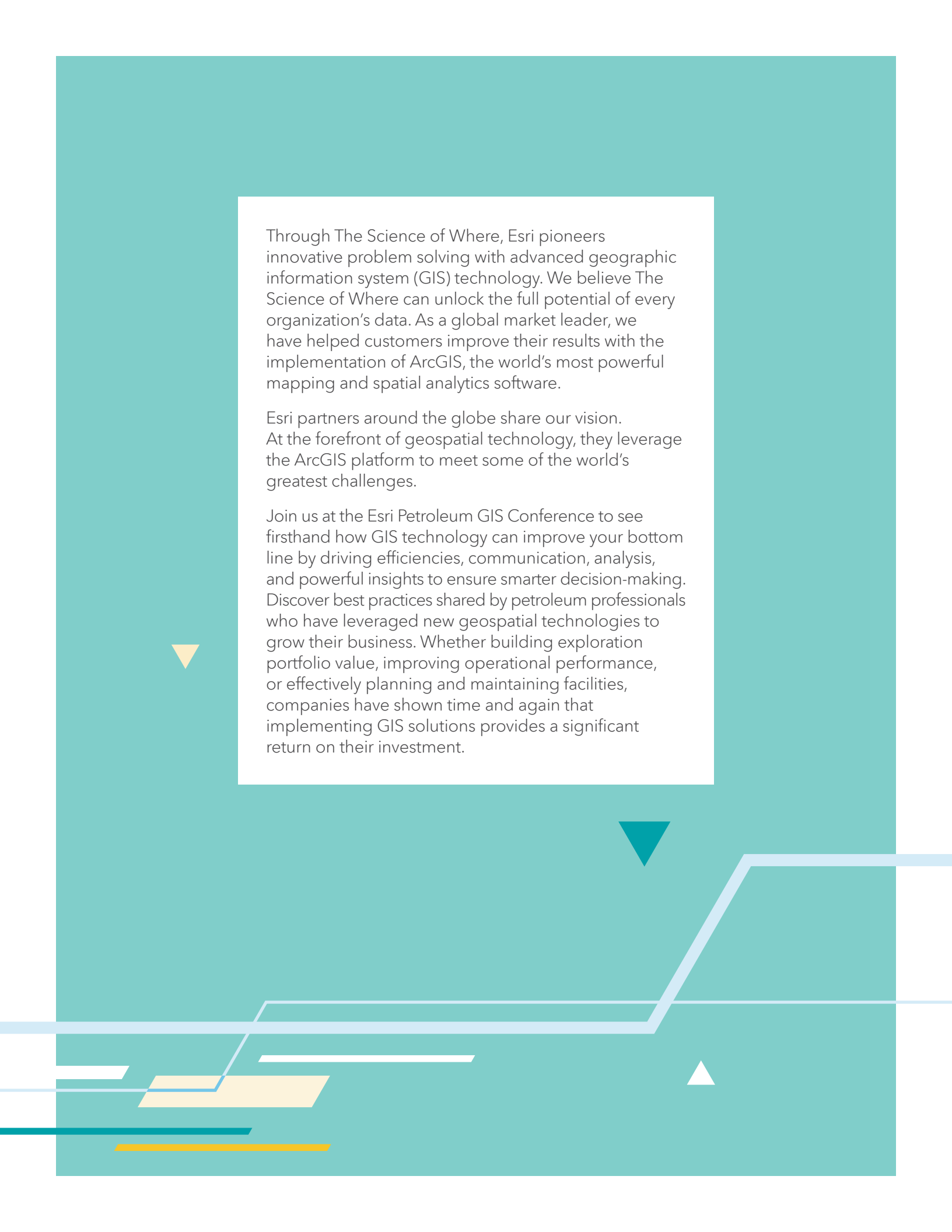




2019 Esri Petroleum GIS Conference Prospectus

May 15-16, 2019 | George R. Brown Convention Center | Houston, Texas



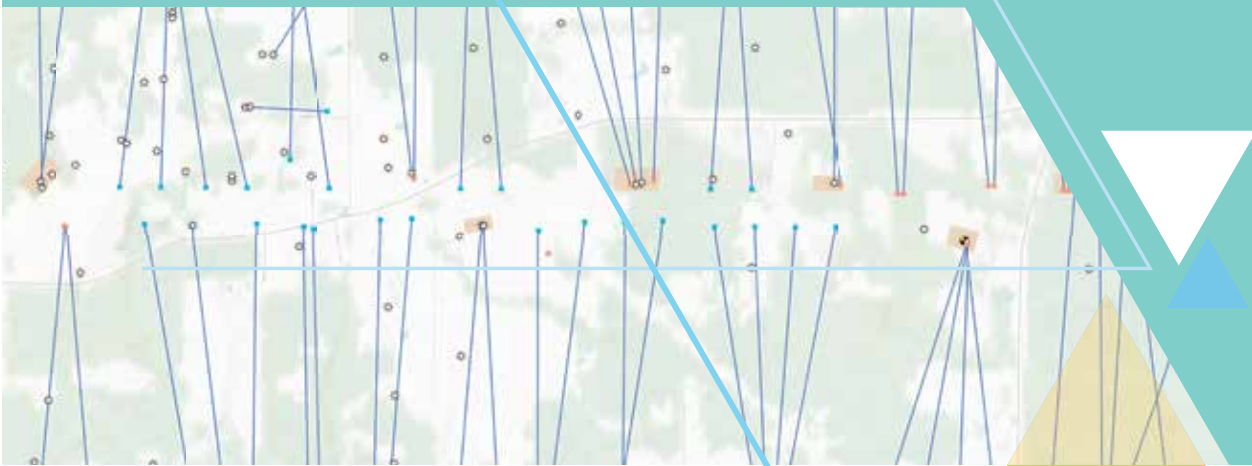
Through The Science of Where, Esri pioneers innovative problem solving with advanced geographic information system (GIS) technology. We believe The Science of Where can unlock the full potential of every organization's data. As a global market leader, we have helped customers improve their results with the implementation of ArcGIS, the world's most powerful mapping and spatial analytics software.

Esri partners around the globe share our vision. At the forefront of geospatial technology, they leverage the ArcGIS platform to meet some of the world's greatest challenges.

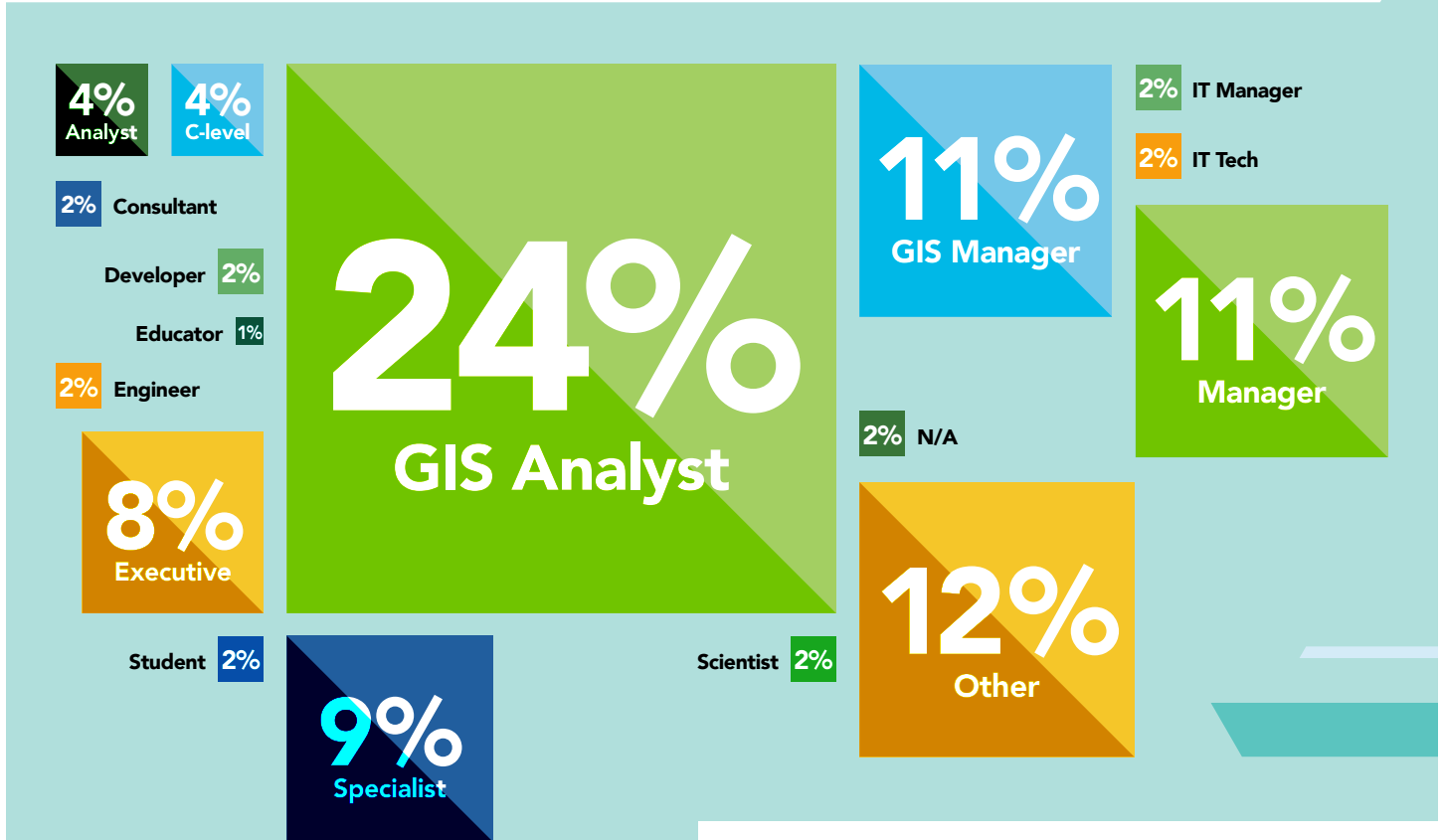
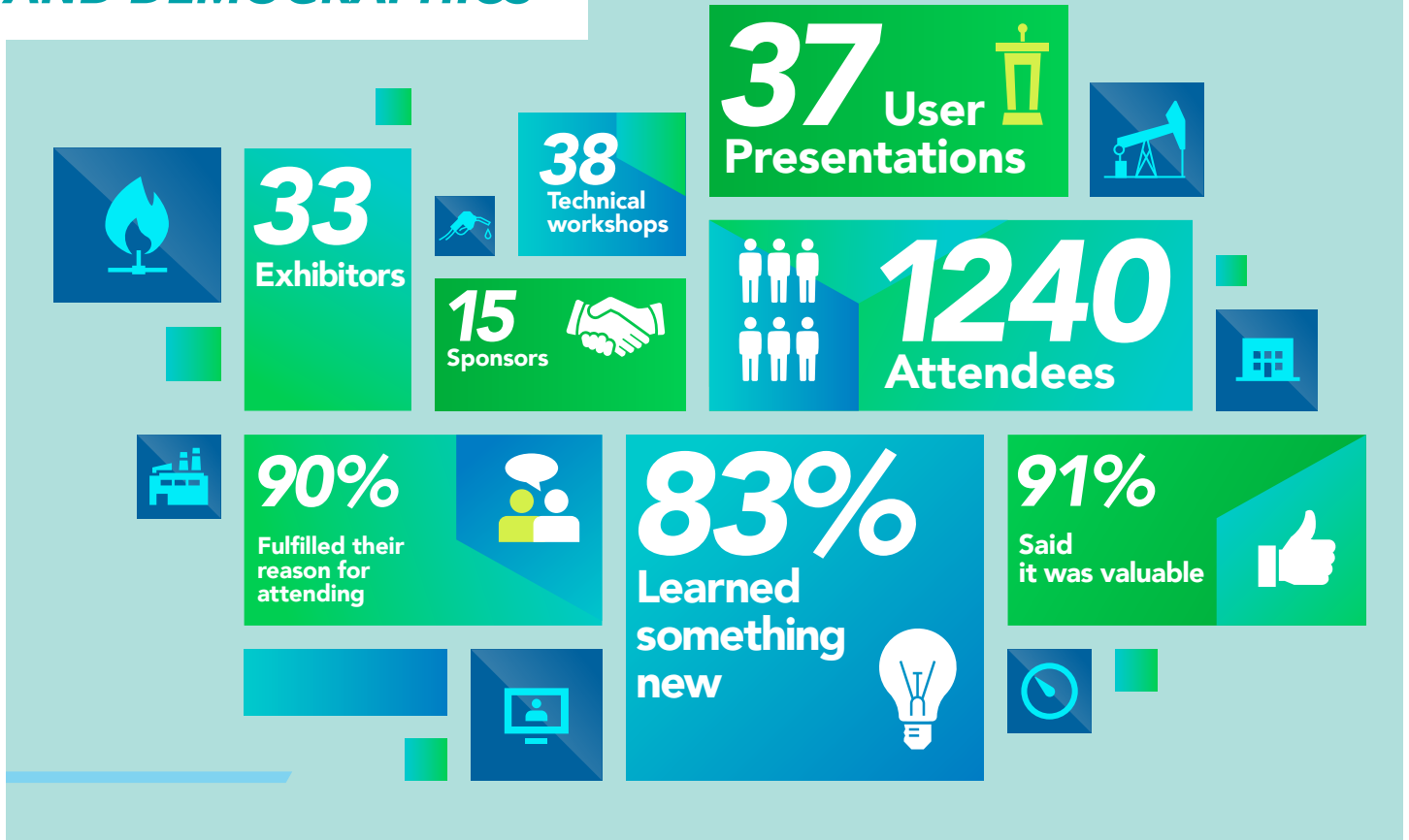
Join us at the Esri Petroleum GIS Conference to see firsthand how GIS technology can improve your bottom line by driving efficiencies, communication, analysis, and powerful insights to ensure smarter decision-making. Discover best practices shared by petroleum professionals who have leveraged new geospatial technologies to grow their business. Whether building exploration portfolio value, improving operational performance, or effectively planning and maintaining facilities, companies have shown time and again that implementing GIS solutions provides a significant return on their investment.

TABLE OF CONTENTS

Key Statistics and Demographics	_____	4
Attendees By Profession	_____	4
2018 Sponsors	_____	5
Sponsor Opportunities	_____	6
Perk Points Menu	_____	6
Exhibitor Opportunities	_____	7
Additional Opportunities	_____	7
Conference Contacts, Location, Dates, and Hours	_____	8
The Fine Print	_____	8



KEY STATISTICS AND DEMOGRAPHICS



2018 Esri Petroleum GIS Conference **ATTENDEES BY PROFESSION**

GOLD SPONSOR



SILVER SPONSOR



2018 SPONSORS

SPONSOR OPPORTUNITIES

Please see our [exhibitor web page](#) for full details.

What's important to your organization? Short- or long-term brand recognition, exhibit space, or networking? With the sponsor packages and perks below, we invite you to customize your sponsorship for a truly unique experience that helps you position your brand to attract and engage the desired decision-makers and influencers in the petroleum audience.

GOLD SPONSOR

\$9,000 plus 45 Perk Points

- One (1) 10' x 20' (maximum size is 20' x 20'). Raw space. Booth expansion is possible with perk points, based on availability.
- Eight (8) Full-conference Registrations. Includes the Plenary Session and all scheduled sessions, workshops, meals, activities, and beverage breaks (does not include fee-based training).
- One (1) Lead Retrieval Unit. Sponsor/Exhibitor is responsible for reserving unit with third-party provider.
- 75-word Corporate Description on the event website
- Early Access to 2020 Esri Petroleum GIS Conference floorplan
- One (1) Graphic Panel Ad. Sponsor to provide print-ready art; Esri to produce. If panel art is not provided by the deadline, sign will be produced with logo only.
- Logo Feature: Email to all registered attendees
- Logo Feature: Event Website
- Logo Feature: Recognition Signage
- Logo Feature: Event T-shirt
- Sponsor-level Recognition Expo Floor Sticker
- Conference Sponsor Logo Lockup: Event and sponsor level-specific logo lockup provided by Esri for use in print or digital publication.
- 15-minute Expo Theater Presentation
- Social Media Promotion: One (1) Tweet. Content to be provided by sponsor and is subject to Esri approval; 280-character count limit including required event hashtag #EsriPUG.

SILVER SPONSOR

\$6,000 plus 35 Perk Points

- One (1) 10' x 10' (maximum size is 20' x 20'). Raw space. Booth expansion is possible with perk points, based on availability.
- Six (6) Full-conference Registrations. Includes the Plenary Session and all scheduled sessions, workshops, meals, activities, and beverage breaks (does not include fee-based training).
- One (1) Lead Retrieval Unit. Sponsor/Exhibitor is responsible for reserving unit with third-party provider.
- 50-word Corporate Description on the event website
- Early Access to 2020 Esri Petroleum GIS Conference floorplan
- One (1) Graphic Panel Ad. Sponsor to provide print-ready art; Esri to produce. If panel art is not provided by the deadline, sign will be produced with logo only.
- Logo Feature: Email to all registered attendees
- Logo Feature: Event Website
- Logo Feature: Recognition Signage
- Logo Feature: Event T-shirt
- Sponsor-level Recognition Expo Floor Sticker
- Conference Sponsor Logo Lockup: Event and sponsor level-specific logo lockup provided by Esri for use in print or digital publication.

Sponsor Deliverables Deadline

MARCH 18

PERK POINTS MENU

All sponsor perks are first come, first secured (FCFS). Certain perks are limited.

- **20 Perk Points**—Additional 10' x 10' Booth Space (max final size 20' x 20' FCFS)
- **20 Perk Points**—15-Minute Expo Theater Presentation (limit 10; FCFS)
- **20 Perk Points**—Networking Social Shared Recognition Opportunity (logo inclusion on event signage and list of opt-in social attendees)
- **15 Perk Points**—Expo Social Shared Recognition Opportunity (logo inclusion on event signage)
- **5 Perk Points**—Full-conference Registrations (includes the Plenary Session; all scheduled sessions, workshops, meals, beverage breaks; and all other conference materials; unlimited)
- **5 Perk Points**—Social Media Promotion (one Tweet; limit two per sponsor)
- **5 Perk Points**—Additional Lead Retrieval Unit (unlimited)

EXHIBITOR OPPORTUNITIES

Please see our [exhibitor web page](#) for full details.

EXHIBITOR

\$3,000

- One (1) 10' x 10' (maximum size is 20' x 20'). Raw space. Booth expansion is possible with perk points, based on availability.
- Two (2) Full-conference Registrations. Includes the Plenary Session and all scheduled sessions, workshops, meals, activities, and beverage breaks (does not include fee-based training).
- One (1) Lead Retrieval Unit. Sponsor/Exhibitor is responsible for reserving unit with third-party provider.
- 25-word Corporate Description on the event website



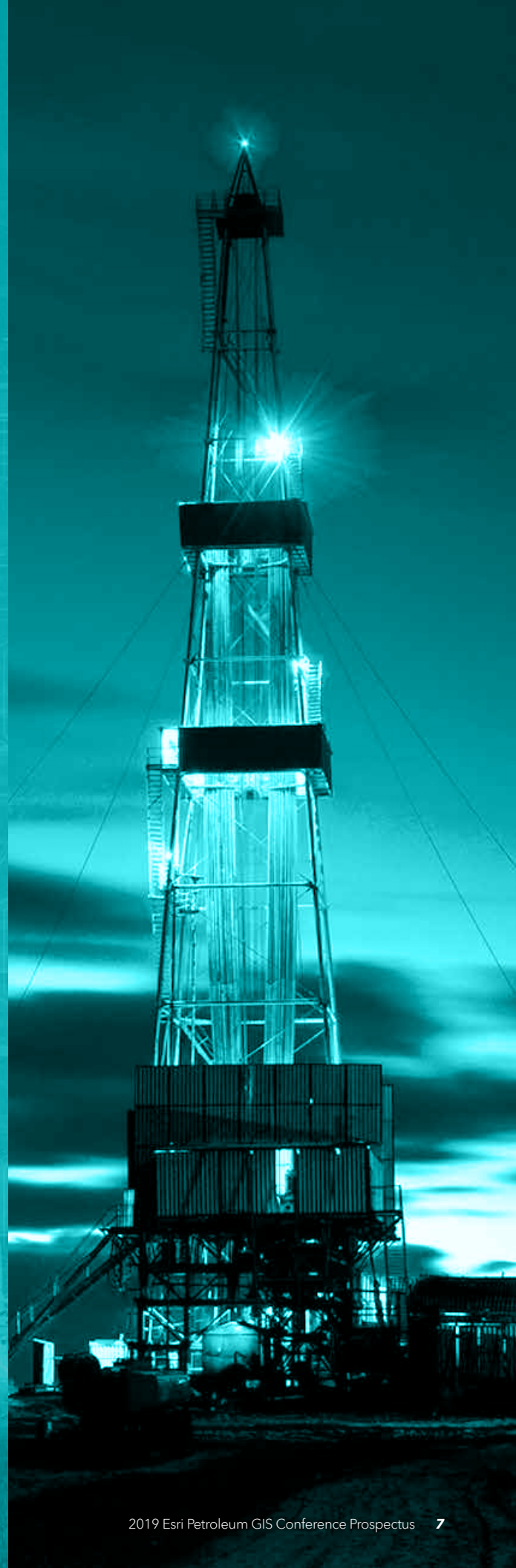
ADDITIONAL OPPORTUNITIES

Please see our [exhibitor web page](#) for full details.

HANDS-ON LEARNING LAB SPONSOR

\$750

- Two (2) Full-conference Registrations. Includes the Plenary Session and all scheduled sessions, workshops, meals, activities, and beverage breaks (does not include fee-based training).
- 25-word Corporate Description on the event website
- Logo Feature: Event Website
- Logo Feature: Recognition Signage
- Social Media Promotion: One (1) Tweet. Content to be provided by sponsor and is subject to Esri approval; 280-character count limit including required event hashtag #EsriPUG.
- Opportunity to provide mouse pad (limit 175)





CONFERENCE CONTACTS

Exhibits and Sponsorships
909-793-2853, ext. 1-2585
exhibits@esri.com

Call for Papers

Badge Registration
confregis@esri.com

Housing
confregis@esri.com

2019 ESRI PETROLEUM GIS CONFERENCE

George R. Brown Convention Center
1001 Avenida De Las Americas
Houston, TX 77010
USA

CONFERENCE DATES MAY 15-16, 2019

EXPO DATES AND HOURS

Setup	Tuesday	May 14, 2019	NOON	5:00 PM
Setup	Wednesday	May 15, 2019	8:00 AM	NOON
Expo Open	Wednesday	May 15, 2019	NOON	6:30 PM
Expo Networking Social	Wednesday	May 15, 2019	5:00 PM	6:30 PM
Expo Open	Thursday	May 16, 2019	8:30 AM	4:30 PM
Dismantle	Thursday	May 16, 2019	4:30 PM	5:30 PM

Sponsor and exhibitor opportunities are available only to members of the Esri Partner Network.

All sponsor and exhibitor applications must be accompanied with an online credit card payment (Visa, Mastercard, Discover, or American Express).

Complimentary Wi-Fi is available throughout the expo hall but is intended for light usage. Esri does not guarantee reception or performance. Additional Internet options are listed in the exhibitor manual.

Sponsor perks may be limited and are secured on a first come, first secured basis. Sponsor deliverables are due no later than March 18, 2019.

Esri Petroleum GIS Conference registrations are exclusively for licensed Esri users and sponsor/exhibitor company employees. Registration includes all scheduled sessions, workshops, and beverage breaks; Expo; Expo Social; and the Wednesday Evening Social. Registrations may not be transferred to anyone else including, but not limited to, contractors, consultants, family members, partners, or nonlicensed clients or other Esri clients or partners without the express written consent from Esri. This provision is intended to be interpreted in its broadest sense and will be strictly enforced.



Copyright © 2019 Esri. All rights reserved. Esri, the Esri globe logo, ArcGIS, The Science of Where, and @esri.com are trademarks, service marks, or registered marks of Esri in the United States, the European Community, or certain other jurisdictions. Other companies and products or services mentioned herein may be trademarks, service marks, or registered marks of their respective mark owners.

G334229_tk