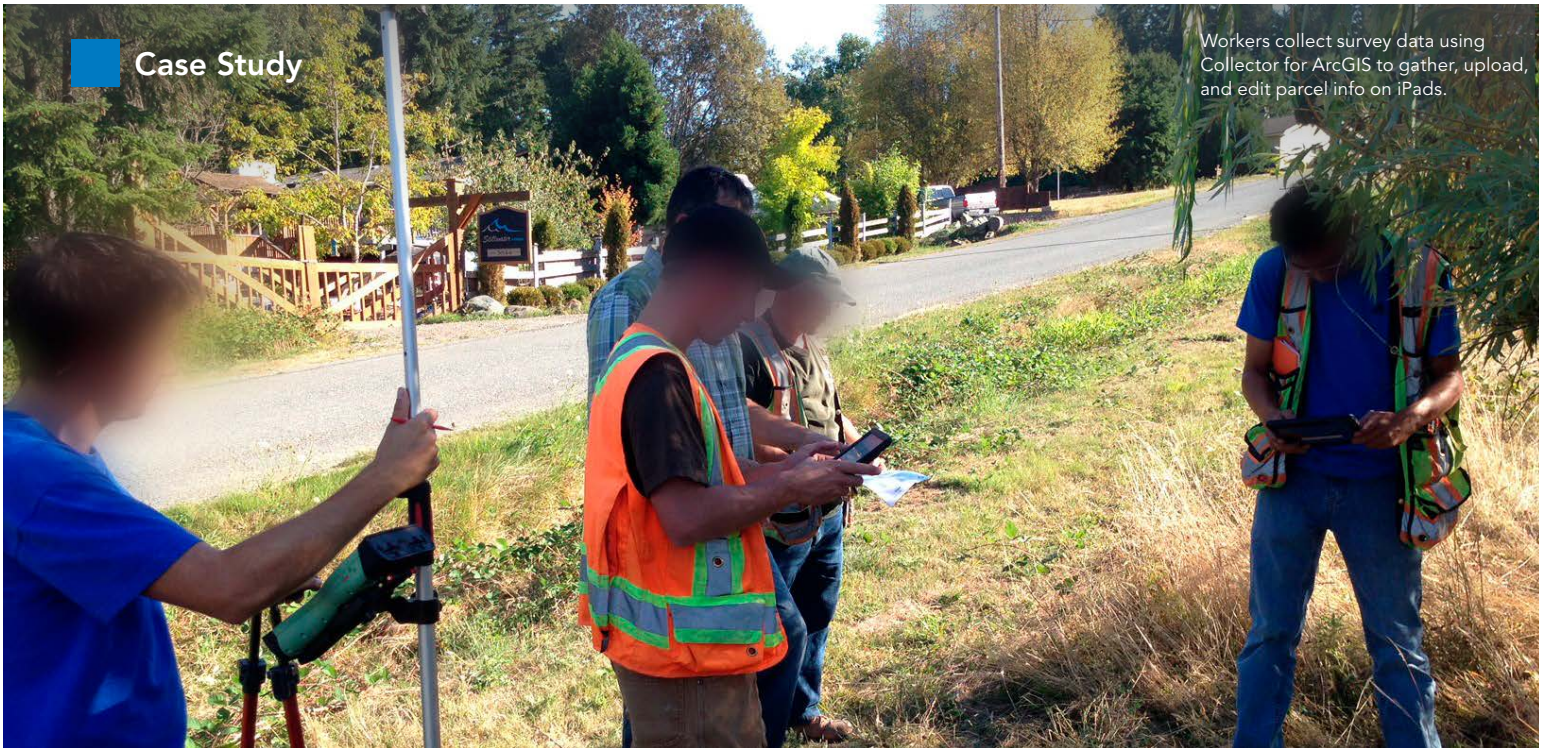


Case Study

Workers collect survey data using Collector for ArcGIS to gather, upload, and edit parcel info on iPads.



LAND ADMINISTRATION

User

The Land Title and Survey Authority of British Columbia

Partner

MNC Ltd.

Challenge

Constructing a consolidated parcel fabric from existing fragmented data sources—all in a short time frame and with a limited budget

Solution

- ArcGIS® Enterprise (formerly ArcGIS for Server)
- ArcGIS Parcel Editor
- Collector for ArcGIS

Results

- Improved speed and efficiency of land-related research, planning, and business decisions through a visual representation of the parcels in the Land Title Register and Crown Land Registry
- Reduced turnaround times for service delivery
- Reduced operational costs

British Columbia Automates Its Parcel Workflow

The Land Title and Survey Authority of British Columbia (LTSA) is a publicly accountable statutory corporation responsible for administering land title and survey systems in British Columbia (BC), Canada.

The Challenge

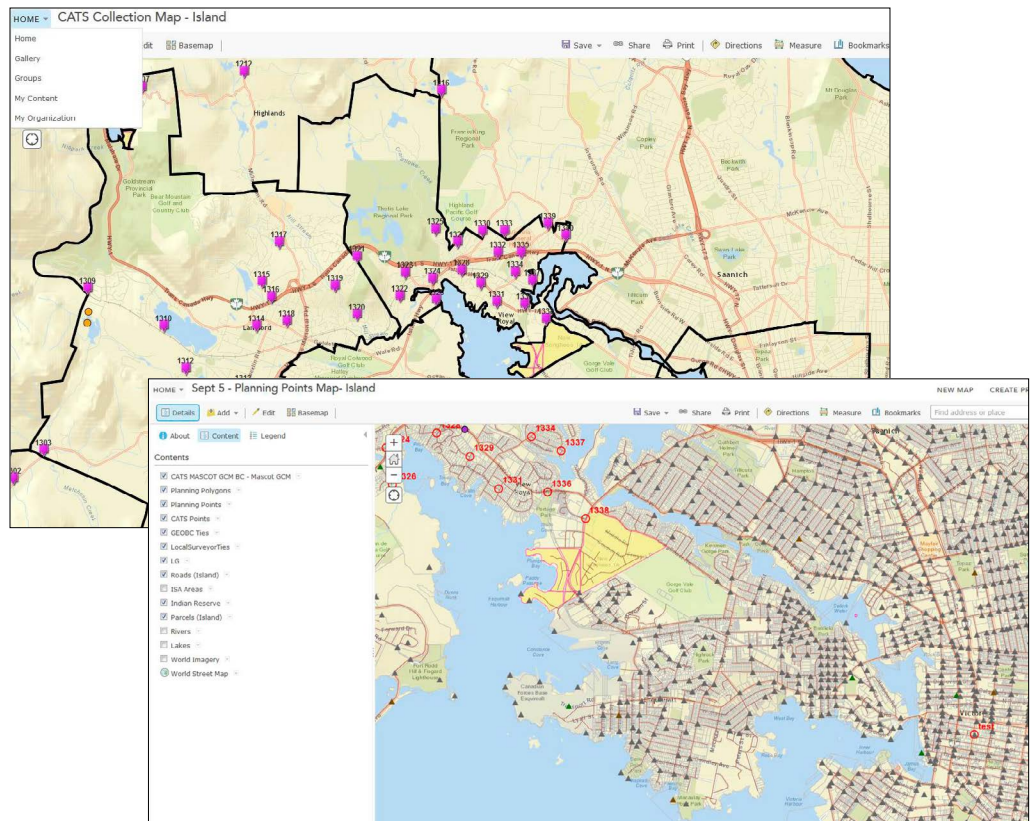
The challenge was to build a parcel fabric of all titled and surveyed Crown land parcels to a known level of quality. Stakeholders needed an easy, efficient means of accessing land title and survey information by using an electronic map of surveyed parcels in BC.

The Partner

MNC Ltd. is a geomatics engineering firm located in Calgary, Alberta, that specializes in working with very large city-, county-, and province-wide datasets across multiple formats and platforms. It has completed numerous projects in Canada and the United States.

The Solution

MNC helped create a complete and sustainable parcel fabric of every surveyed and provincial Crown land parcel within BC. The firm collected over 2,600 cadastral ties in the field, integrating them into BC's parcel database to support ongoing spatial improvements to the fabric. Engineers at MNC also built an automated solution, based on the firm's digital survey plan submission architecture, which sped the electronic submission of digital survey plans to LTSA for operational maintenance.



This geospatial solution enables information from a parcel database to be displayed as editable features.

“MNC compilation work, assisted by ArcGIS desktop and mobile solutions, proved to be of excellent quality even under very aggressive deadlines and within the budget envelope.”

Mike Thomson,
British Columbia Land Survey,
Surveyor General of British Columbia

The Results

The Province of British Columbia now has a complete, comprehensive, and actively maintained parcel fabric with a known level of accuracy throughout, which will support fundamental economic growth through the province. In addition, LTSA customers now have map-based access to electronic services.



esri.com/landadministration